

FV 28 G – Glass washer



- Eco-filter system improves the drain water quality and facilitates cleaning
- Entry height 300 mm also suitable for washing of large beer glasses
- Self-cleaning programme
- Pressed wash tank with integrated basket guide rails
- Double-walled tank housing and door
- Rinse aid and liquid detergent dosing units with partial containers
- Combined rotating wash arm system with slit nozzles and stationary high-pressure spray jets
- Wash pump with glass-protecting 'soft start'

Technical data

Dimensions

Width	460 mm
Depth	550 mm
Height	700 mm
Entry height	300 mm
Basket dimensions	400 x 400 mm

Machine Weight

Net weight (empty)	42 kg
Operational (full with water / no crockery)	53 kg
Gross (with packaging)	54 kg

Capacities

Cycles *	60/120 sec
Capacity	60/30 baskets/h
Capacity (according to USA calculation)	83/42 baskets/h
Capacity	1500 glasses/h
Capacity (according to USA calculation)	2082 glasses/h
Pump motor	0,55 kW
Tank content	11 litres
Final rinse	2,2 litres/basket
Tank heating	2 kW

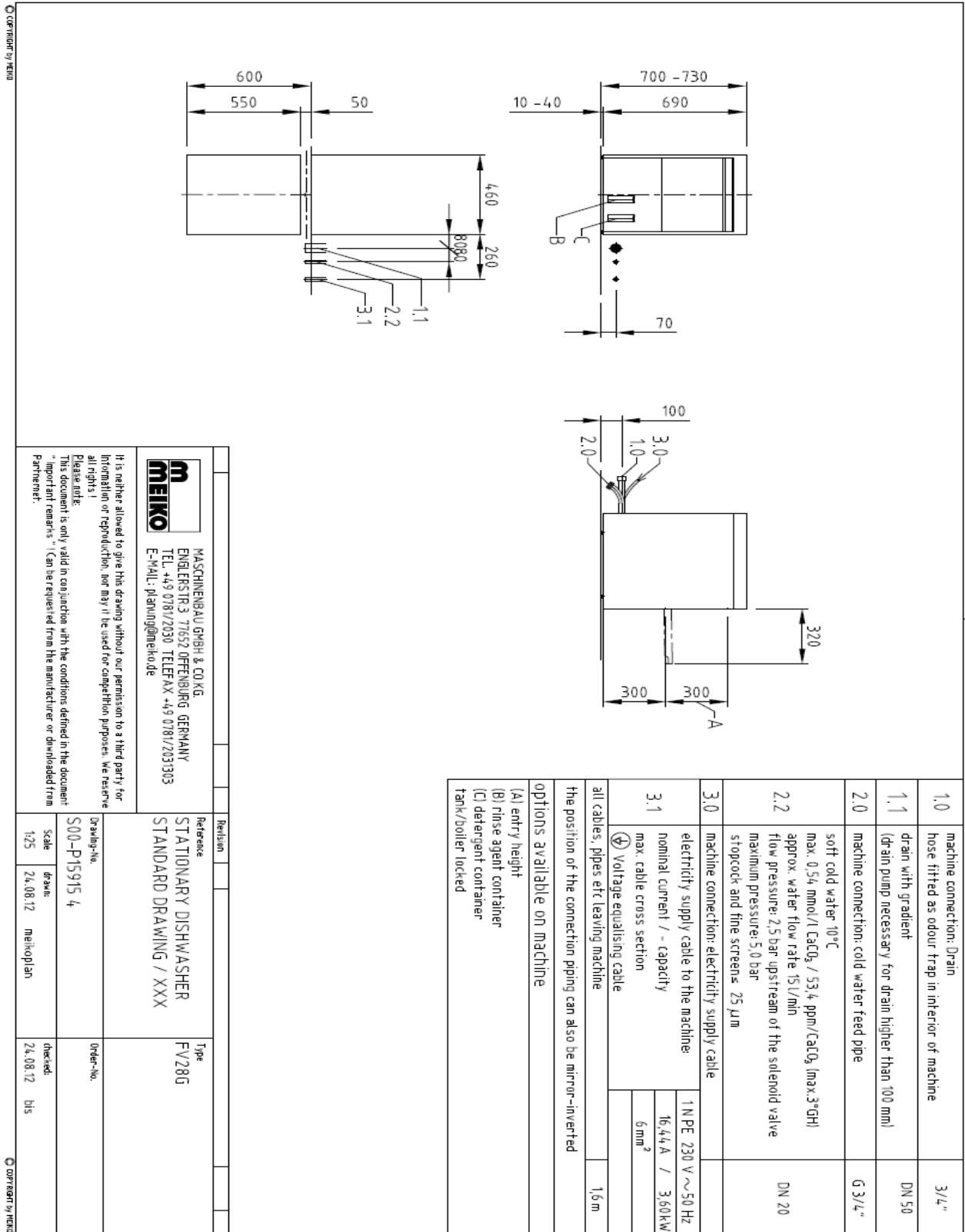
Built-in boiler

Built-in boiler 10-60°C	3 kW
-------------------------	------

Total connected load for alternating current 1NPE 230V- 50Hz

Total connected load 10-60°C	3,55 kW
------------------------------	---------

Drawing:



It is neither allowed to give this drawing without our permission to a third party for information or reproduction, nor may it be used for competition purposes. We reserve all rights!
 Please note:
 This document is only valid in conjunction with the conditions defined in the document "important remarks" (can be requested from the manufacturer or downloaded from PartnerNet).

MEIKO
 MASCHINENBAU GMBH & CO KG
 ENGELSTR.3 71652 OFFENBURG GERMANY
 TEL: +49 0781/2090 TELEFAX: +49 0781/2031303
 E-MAIL: planung@meiko.de

Revision		Type	FV28G
Reference	STATIONARY DISHWASHER STANDARD DRAWING / XXX		
Drawing-No.	S00-P15915_4	Order-No.	
Scale	1:25	Drawn:	meikoplän
	24.08.12	Checked:	bis