

Ecostar 545 D – Hood Type dishwasher



- 440 mm **entry passing height**
- Powerful upper and lower **stainless steel wash and rinse system**
- Hood with **double wall construction for sound and heat insulation**
- **Electronic program** selection from touch sensitive control panel and temperature display for wash and final rinse water
- **Self-cleaning program** cycle after drain down
- Hood open to the rear eliminates **vapour emission** towards wash-up staff
- **soft start feature** on wash pump (option)
- **3 programmes** (90 / 120 / 240 sec.)
- Technical temperature indication for wash and rinse temperatures

Technical data

Dimensions

Width	635 mm
Depth	750 mm
Height	1470 mm
Total height with opened hood	1965 mm
Entrance height	440 mm
Basket dimensions	500 x 500 mm

Machine Weight

Net weight (empty)	111 kg
Operational (full with water/no crockery)	133 kg
Gross (with packaging)	123 kg

Capacities

Cycles *	90/120/240 sec
Capacity	40/30/15 baskets/h
Capacity (according to USA calculation)	56/42/21 baskets/h
Capacity	720 plates or 1440 glasses/h
Capacity (according to USA calculation)	999 plates or 1999 glasses/h
Pump motor	0,75 kW
Tank content	22 litres
Final rinse	3 litres/basket
Tank heating	1,3 kW

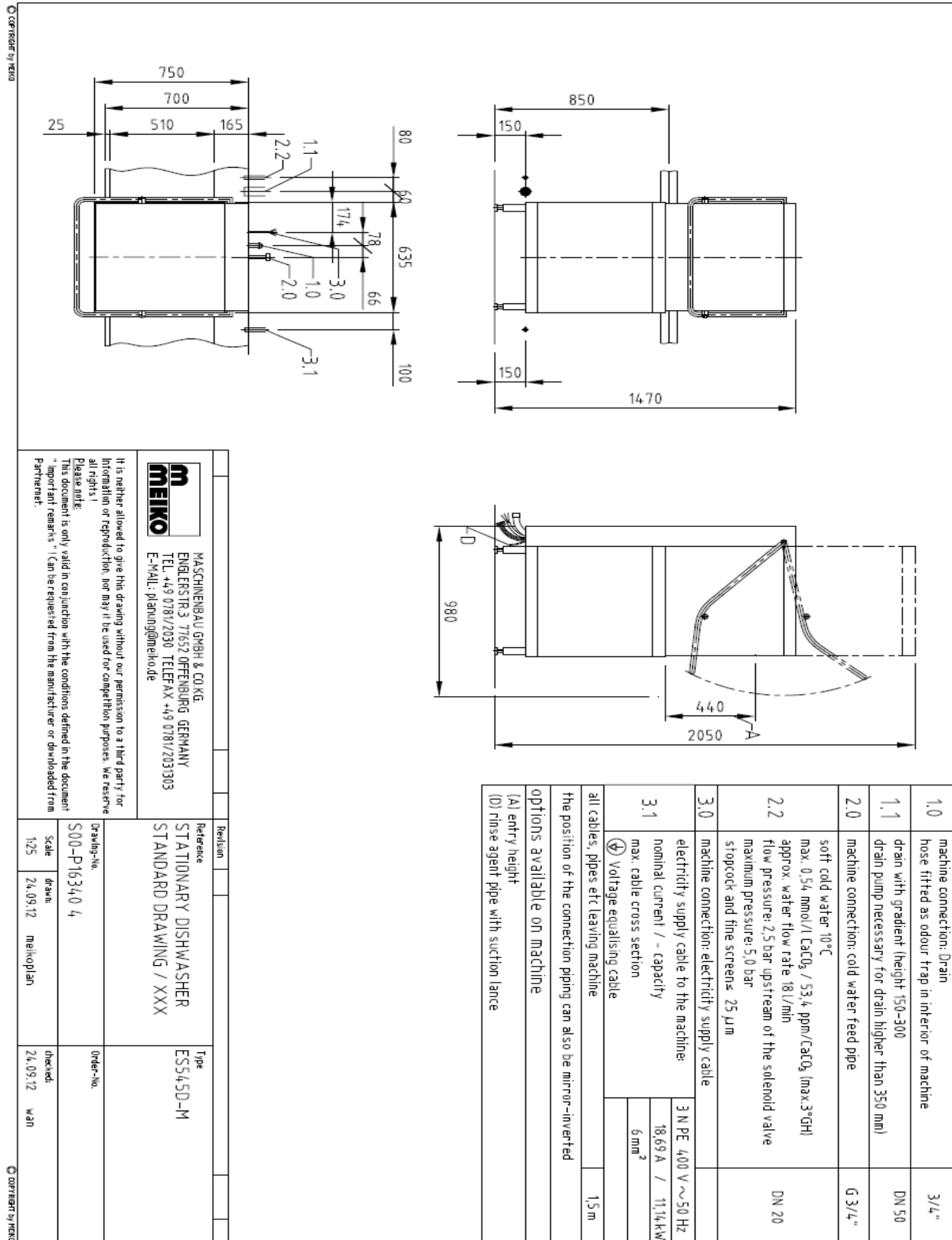
Built-in boiler

10°C inlet temperature	9 kW
45°-60°C inlet temperature	7,5 kW

Total connected load for three phase current 3NPE 400V-50Hz

10°C inlet temperature	11,1 kW
45°-60°C inlet temperature	9,6 kW

Drawing:



1.0	machine connection: Drain hose fitted as odour trap in interior of machine	3/4"
1.1	drain with gradient (height 150-300)	DN 50
2.0	drain pump necessary for drain higher than 350 mm)	
2.0	machine connection: cold water feed pipe	G 3/4"
2.2	soft cold water 10°C max. 0.54 mmol/l CaCO ₃ / 53.4 ppm/CaCO ₃ (max.3°GH) approx. water flow rate: 18 l/min flow pressure: 2.5 bar upstream of the solenoid valve maximum pressure: 5.0 bar	DN 20
3.0	stopcock and fine screens: 25 µm	
3.0	machine connection: electricity supply cable	
3.1	electricity supply cable to the machine: nominal current / - capacity max. cable cross section	3 N PE 400 V ~ 50 Hz 18,69 A / 11,14 kW 6 mm ²
3.1	⚡ Voltage equalising cable	
all cables, pipes etc leaving machine		
the position of the connection piping can also be mirror-inverted		
options available on machine		
(A) entry height		
(D) rinse agent pipe with suction lance		

MASCHINENBAU GMBH & CO KG
 ENGINEERS TR. 3 77652 OFFENBURG GERMANY
 TEL. +49 0781/2030 TELEFAX +49 0781/203303
 E-MAIL: planung@meiko.de

MEIKO

It is neither allowed to give this drawing without our permission to a third party for information or reproduction, nor may it be used for competition purposes. We reserve all rights.
 Please note:
 This document is only valid in conjunction with the conditions defined in the document "important remarks" (can be requested from the manufacturer or downloaded from Partnernet).

Revision	Reference	Type
	STATIONARY DISHWASHER STANDARD DRAWING / XXX	ESS45D-M
Scale	Drawing-No.	Order-No.
1:25	S00-P16340_4	
drawn	Scale	checked
24.09.12	meklopian	24.09.12
		wan